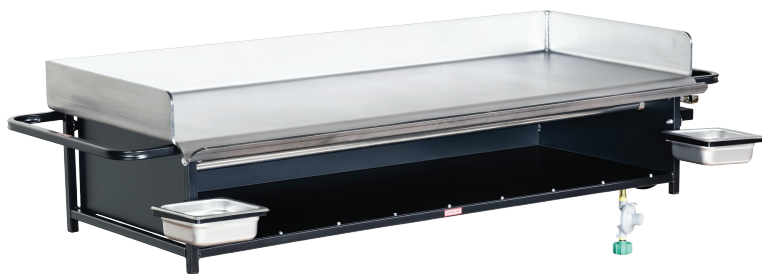


PG-52

SKU: 300308B



PG-52



PG-52 Package with Folding Cart, Leg Brace, & 30 lb. Propane Tank

# of Burners & Controls:	3
BTU's per Burner:	42,000
Total BTU Output:	126,000
Overall Dimensions:	60" W x 23" D
Overall Height:	14 1/2"
Cooking Surface:	52" W x 20" D
Cooking Area:	1040 in ²
Product Weight (lbs.):	176
Shipping Weight (lbs.):	222

Overall Cart Dimensions:	51" W x 24" D
Overall Cart Height:	23"
Cart Weight (lbs.):	45

- Stainless Steel Burner Tube Assemblies
- Adjustable Push-to-Turn Control Valves with Chrome Knobs
- 1/4" Thick Steel Griddle Plate (Cured & Ready to Use)
- 4" Lip Around Back & Sides
- 2 Removable 1/6 Stainless Steel Drip Pans
- Powder-Coated Tubular Steel Frame
- Warming Area Under Burners
- Available for Natural or Propane Gas
- Packages Available

Specify Gas Type When Ordering

ACCESSORIES

301016
301017

30 lb. Propane Cylinder
40 lb. Propane Cylinder

301169
301169BK

Green Vinyl Cover
Black Vinyl Cover

ALL EQUIPMENT IS FOR OUTDOOR USE ONLY

www.BigJohnGrills.com

526 East Rolling Ridge Dr.
Bellefonte, PA 16823
© Big John Grills 2019

P: 814-359-2755
F: 814-359-2621
Sales@BigJohnGrills.com